

Dr. Aboobacker Siddique P
Secretary
Department of Agriculture,
Animal Husbandry and co-operative
Jharkhand



forward

This report highlights the significance in empowering farmers, promoting sustainable agriculture and fostering rural development in Jharkhand.

It reflects our accomplishments and it is essential to recognize the invaluable contributions of all stakeholders involved – from farmers and extension workers to researchers, policymakers and development partners. It is through our collective efforts that we have been able to make a tangible difference in the lives of individuals dependent on agriculture for their livelihoods.

By harnessing the power of technology, promoting sustainable practices and fostering inclusive growth, we aim to unlock the full potential of our agricultural resources and ensure food security, economic prosperity and environmental sustainability for generations to come.

I believe that the annual report serves as a valuable resource for officers and allied departments involved in agricultural development, enabling them to evaluate performance, analyze data, formulate policies, allocate resources, monitor progress, engage stakeholders and ultimately drive positive change in the agricultural sector.

(Dr. Aboobacker Siddique P)

Dr. Kumar Tarachand, I.A.S
Director Agriculture
Jharkhand, Ranchi



forward

Agriculture Extension plays an important role in technology dissemination. Through vibrant extension functionaries, the valuable findings from the research institutions as well as the newer agricultural management practices can be brought down to the farmer level. Technology assessment, demonstration and capacity development programmes will ensure maximum returns from farming activities. Thus agricultural extension supports the farming community and enhances rural development.

I hope this Annual Report 2023-24 would help officers of agriculture and allied sectors feel more competent and confident in their roles which ultimately help sustainable agricultural development in the state.

I wish all success for this endeavor.

(Dr. Kumar Tarachand)

Vikash Kumar
Director SAMETI
Jharkhand, Ranchi



forward

During the year SAMETI, Jharkhand has taken keen interest in identifying the gaps in extension reforms with respect to adoption of new technology through capacity building and skill development of farmers. SAMETI has organised several training programmes on extension management, horticulture, human resource development (HRD), information technology to facilitate and motivation of farmers/Group of farmers/ NGOs. SAMETI has facilitating convergence of programmes in planning, execution, implementation and ensuring an integrated, broad-based extension delivery mechanism consistent with farming system approach.

The annual report of SAMETI, Jharkhand for the year 2023-24 demonstrates our continued commitment to the first rate of extension training in the state and highlights the activities of SAMETI. The emphasis was to reach innovated and progressive farmers with improved technological skills. Performance of SAMETI can be evaluated in terms of impact which over the years will reflects its commitment towards all round growth of agricultural development in the state. The major emphasis of SAMETI during the year has been given below :

1. Empowered the farmers/ producers through organising the training programme, kisan melas, district-state-national level exposure visits, etc. for adoption of market based new technology.
2. Emphasis of IT in the field of agriculture and allied sectors.
3. Strengthening research extension marketing linkages through participation of farmers, NGOs & educational institutes.
4. Improving linkages between various institutional organisations.
5. Established farm schools based on the principles of "Learning by doing" as well as "Seeing and harvesting is believing" with focus on farmer to farmer extension.
6. Formation of Farmers Interest Groups / Commodity Interest Groups to identified needs and requirements of the farmers
7. Strengthened Farmers Advisory Committees at State, District and Block level comprising a group of farmers to advise and provide inputs to the administrative bodies at each level.

Sincere and dedicated efforts of Sri. Abhishek Tirkey, Dy. Director (A.E.M.) SAMETI and Smt. Kumud Kumari, Dy. Director (Agriculture & Allied) SAMETI., in all activities of SAMETI is greatly acknowledged.

(Vikash Kumar)

CONTENT

Achievements so far	1
1. Background Information	2
2. About SAMETI	3
3. Mandate of SAMETI	3
4. Resources Available	4
5. Training Methodology	4-6
6. Research-Extension-Farmer-Market Linkage	7
7. Linkage with Institution	8
8. Processes Introduced	9
9. Institutional Sustainability	9
10. Task Ahead	9
11. Future Challenges	9
12. Publications	10
13. Post Graduate Diploma in Agricultural Extension Management (PGDAEM)	11-13
14. Skill Training of Rural Youth (STRY)	14
15. Diploma in Agricultural Extension Services for Input Dealers (DAESI)	15-16
16. SAMETI Website	17
17. 26 th January, 2024 Jhanki	18
18. Participation in National Workshop	19-20
19. Participation in Annual Training Planning, Work Shop (ATPW-2024)	21
20. Training Programmes organized during (2023-24)	22
21. Innovative Activities (Birs Kisan Rath & Nukkad Natak)	23-26
22. New Schemes (VISTAAR & Pilot Project on School Soil Health Programme)	27-29
23. Food & Nutrition Security (Krishonnati Yojna)	30-31
24. Official status of 24 ATMA Districts of Jharkhand	32-33
25. Website, E-mail Address of ATMA districts, SAMETI, Secretary, Agriculture, Animal Husbandary and Co-operative Department, Govt. of Jharkhand	34
26. Physical and Financial Progress (2023-24)	35-46

ACHIEVMENT SO FAR

Under “Support to State Extension Programmes for Extension Reforms” with the facilitation of SAMETI, Jharkhand and ATMA following milestones were achieved :

1. Organized 12 training programme during 2023-24 and above 618 participants have benifited.
2. Brought 07 Publications and 5 vinyl so far for use by extension functionaries and farmers.
3. As per the draft SREP 24 ATMA districts, State Extension Work Plan (2024-25) has been prepared according to revised cafeteria activities of ATMA Schemes.
4. During the year 2023-24, a total 66 candidates were enrolled in the PGDAEM course.
5. A total of 19 State Level Kisan Mela cum Gosthi has been organized during 2023-24 for the improvement of technical knowledge and usefull effect on participants farmers (Participated Aprox 9500 farmers).
6. A total 256 farm school were established and operationalized at 24 ATMA districts during 2023-24.
7. Massive publicity campaign like Birsa kisan Rath, Nukkad Natak has been organised for promoting all central sector and state schemes through Electronic Media and Mass Media.
8. Under VISTAAR programme 11 Districts. has been selected for pilot testing.

1. BACKGROUND INFORMATION

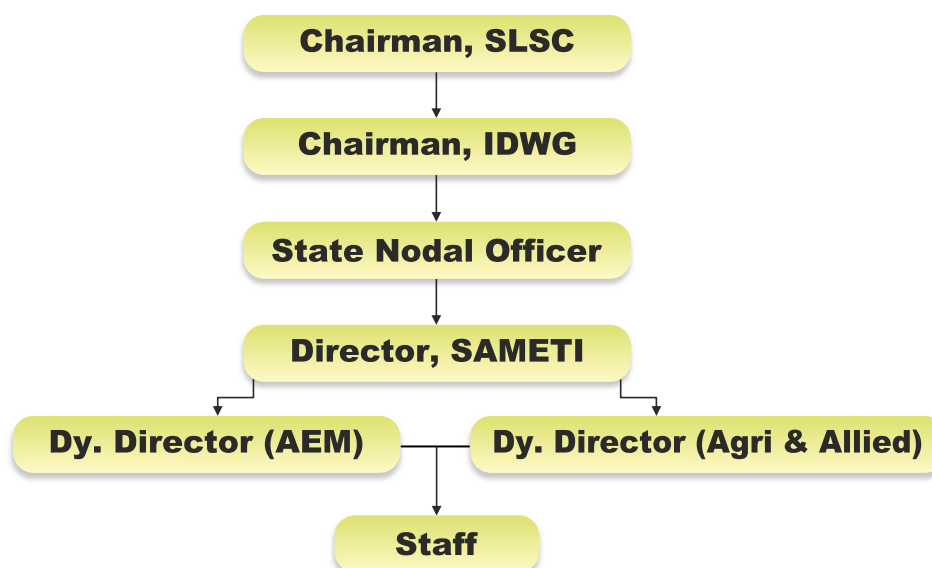
The Sub Mission on Agricultural Extension (SMAE) under the National Mission on Agricultural Extension and Technology (NMAET) being implemented during the 12th Plan with an objective to restructure and strengthen the agricultural extension machinery with a judicious mix of physical outreach of personnel, enhancement in quality through domain experts & regular capacity building, interactive methods of information dissemination, Public Partnership, pervasive & innovative use of Information & Communication (ICT) / Mass Media, Federation of groups and convergence of extension related efforts under various schemes and of Government of India and the Governments. The SMAE aims to strengthen, expand and upscale Extension & Information Technology (Schemes). The ongoing Extension include the Central Sector and Sponsored Schemes being implemented by Extension Division/Directorate of Even in the case of Central Sector which have been subsumed within the a greater role has been envisaged for the through their active involvement in implementation and monitoring.

The erstwhile Scheme 'Support to State Extension Programs for Extension Reforms (ATMA)' implemented since 2005 has now been included as a component of the extensive/ Sub-Mission on Agriculture Extension (SMAE) under NMAET with some cost revisions and additional components. It is now under Private implementation in 263 blocks in Jharkhand States. The scheme Technology promotes decentralized farmer-driven and farmer accountable extension system through an institutional arrangement for technology programs dissemination dissemination in the form of an Agricultural State Technology Management Agency (ATMA) at appropriately district level. Under the scheme grants-in-aid is existing released to states with an objective to support IT) State Governments efforts of revitalization of Schemes the extension system and making available Centrally the latest agricultural technologies in different the thematic areas to increase agricultural extension production through extension activities viz Schemes Farmers Training, Demonstrations, Exposure Mission, Visits, Kisan Mela, Mobilization of Farmers States Groups and Setting up of Farm School through are disseminated to farmers of the Jharkhand.

2. ABOUT SAMETI

The State Agricultural Management and Extension Training Institute (SAMETI) was established and made autonomous under societies act. SAMETI was established to provide extension input to the field functionaries and consultancy in areas like project planning, appraisal and implementation, etc. It also focuses to conduct problem oriented studies in agriculture management, communication, participatory methodologies, post harvest technology and marketing. After the creation, it established close linkages with local institutions like KVK, ZRS, BAU, HARP, XISS, ILRI, R.K. Mission, GVT and with MANAGE and other state and national level management institutions.

ORGANIZATIONAL SET UP OF SAMETI



In pursuance of the number of mechanisms built into the project design and to ensure effective coordination amongst Departments like Agriculture, Animal Husbandry, Fisheries, Horticulture, Soil Conservation, etc., a State level Inter Departmental Working Group (IDWG) under the Chairmanship of the Secretary (Agriculture). In departments like Horticulture, Soil Conservation, etc. where separate Secretaries do not exist, Directors of the Departments concerned may act as Members of the IDWG.

3. MANDATE OF SAMETI

1. To develop systematic linkage between state, regional and international institutions of outstanding accomplishment in the field for Agricultural Extension Management.
2. To gain insight into Agricultural Extension Management System and Policies together with problems and constraints at each step and stage.
3. To identify, appreciate and develop modern management tools, techniques in problem solving approaches utilizing the mechanism of personnel management, resource management, input management and the conflict management at organization level.
4. To develop skill in organizing need based field programme for training and re-training of senior field level functionaries for executing extension programme.

5. To conduct programme oriented researches in the area of Agricultural Extension Management as a sequel to provide feedback to training programme. Such kind and types of researches will generally be undertaken to the recommendation and issues emanating from training and vice-versa.
6. To serve as repository of ideas and develop information, regional communication and documentation service, etc. in regard to the subject of Agricultural Extension Management.

4. RESOURCES AVAILABLE

- Meeting Room/ Syndicate Room
- Office
- Audio Visual Aids
- Library
- Uninterrupted Power Supply
- Trained Faculty Member
 - Agricultural Extension Management
 - Agricultural & Allied

5. TRAINING METHODOLOGY

In the recent past, Extension Training Programmes have witnessed multifarious changes in the training methodology. The old days' training methods like lecture are now being replaced with different multi dimensional training method with the introduction of modern communication techniques, an extension training has received numerous improvements. Senders (1965) commented that to



make a training effective it should be based on the fundamentals that people learn by seeing with their own eyes, hearing with their own ears, saying with their mouths and doing with their own hands. Considering the above factors and all the modernization in the fields of training methodology, the institute has also incorporated latest training techniques and extension teaching methods by linkage with other institution like MANAGE, XISS, R. K. Mission, BAU.

A brief discussion of the training approach/methodology presently being followed by the institute is given here under :

i) Lecture-cum-Group Discussion / Group Exercise : The participants of the training courses conducted by this institute usually are Master Trainers/ Scientists of State Agricultural Universities and State, District & Sub Divisional level Extension Officers from State Govts. Since the adult/senior people do not relish too much listening to others, the talk-cum-discussion method is used to orient the participants about concept of a particular module during the training session. The opportunity is provided to the participants to discuss their field experiences and problems related to the particular module. This method is used for the modules on extension talk, skill teaching, information technology and other topics like leadership development, motivation etc.

ii) Planning Session : In all the courses conducted by the institute, before practice or presentation on any module, the participants are provided with an opportunity to plan the particular topic in each module under the guidance of faculty members.

iii) Sharing of Experience : In many a cases, a sharing of experiences session included for better understand of problems and prospects of case studies for proper implementation of project at grass root level.

iv) Video films : Video Films offer visual and auditory simulation which can enhance learning and retention. It allows for complex concepts to be demonstrated effectively, making them easier to understand. Video films are versatile and can be accessed anytime, anywhere making it convenient for learner to proceed at their own place.

v) Field Visits : Field Visits provide exposure to real life situations, allowing participants to apply theoretical knowledge to practical scenarios. Field visits after involve interaction with professionals in the field. Providing opportunities for networking mentorship and learning from industry experts

vi) Practice Session : After planning the topic and demonstration, the participants are provided with an opportunity to practice it. The practice on letter writing and drawing techniques are given to the participants in order to develop skill in preparation of visual aids in computer. Similarly participants practice for extension talk session as well as skill session before the actual presentation. This helps in developing confidence among the participants in use of various extension methods and Audio Visual Aids in the field situation.

vii) Presentation : The presentation of extension talks and the skill teaching plans by the participants forms one of the important techniques adopted in all the courses. These presentations may either be an individual or a group activity. The extension talks delivered by the participants would invariably be supported by some kinds of visual aids, which they would prepare by themselves in consultation with the faculty members. The participants are requested to present their talk plans and skill plans, after proper planning and practice/rehearsal.

viii) Appraisal : The appraisal of the presentations of extension talks and skill teaching plans is done by the faculty members and participants on certain norms. The appraisal of the visual aids is part of the appraisal of extension talks. In the process of appraisal, the strong points are highlighted and points for improvement are given in the form of suggestions for further improvement.

ix) Recall Session : The recall is done with the specific objectives to strengthen the remembrance of the participants on the major learning's daily/weekly. The participants are asked to recall the important/major learning's on individual/group basis, which are visualized on chart(s) and kept displayed in the classroom till concluding session.

x) Back at work Plan : At the end of the course the participants are requested to indicate about the major learning during the course and their application in their back at home situation.

xi) Evaluation : The training programmes conducted by the institute are being evaluated which help in monitoring the training progress and also provide opportunity to the faculty to incorporate the topic(s)/revise methodology as per the need of the trainees while planning for future course.

xii) Inductive Learning : Generally in most of the courses the above mentioned training methodology is adopted. However, in some courses like Extension Management, PRA Techniques in which participants are divided in sub groups and task given is used. The group members are requested to assemble in general session for presentation/appraisal/inputs. This provides 100% involvement of the participants.

6. RESEARCH EXTENSION FARMER MARKET LINKAGE

The current institutional framework for technology transfer with its institutional and operational constraints severely limits the effectiveness of the public extension systems to disseminate location specific technology to different socio-economic groups of farmers. Also, because of policy changes in the wake to economic liberalization, the private sector and commercial farmers are taking more responsibility for technology dissemination. Such a dynamic situation calls for systematic reforms of the Agricultural Technology System (ATS), both to strengthen linkages between research, extension and farmers and to achieve better system integration among agencies involved in technology transfer. An important part of these reforms includes restructuring the extension services to increase its technical capacity and expand its subject matter coverage, while improving its financial sustainability. Strengthening the R-E linkage is a major step in bringing about improvements in existing farming system. Extension system puts demands on research system and receives solution from it.

The research system in turn gets feedback from extension system. Farmer has found his place in this link through representation in GB and AMC.

Research extension linkage is becoming stronger with the involvement of KVK and ZRS scientist in the programme. KVK/ZRS is helping ATMA in preparation of SREP and the block action plans (BAP). KVK is also conducting adaptive trials with ATMA. Such linkages have been found to be effective between ATMA-Chaibasa & KVK - Jagannathpur and ATMA - Palamau & KVK - Chianki.

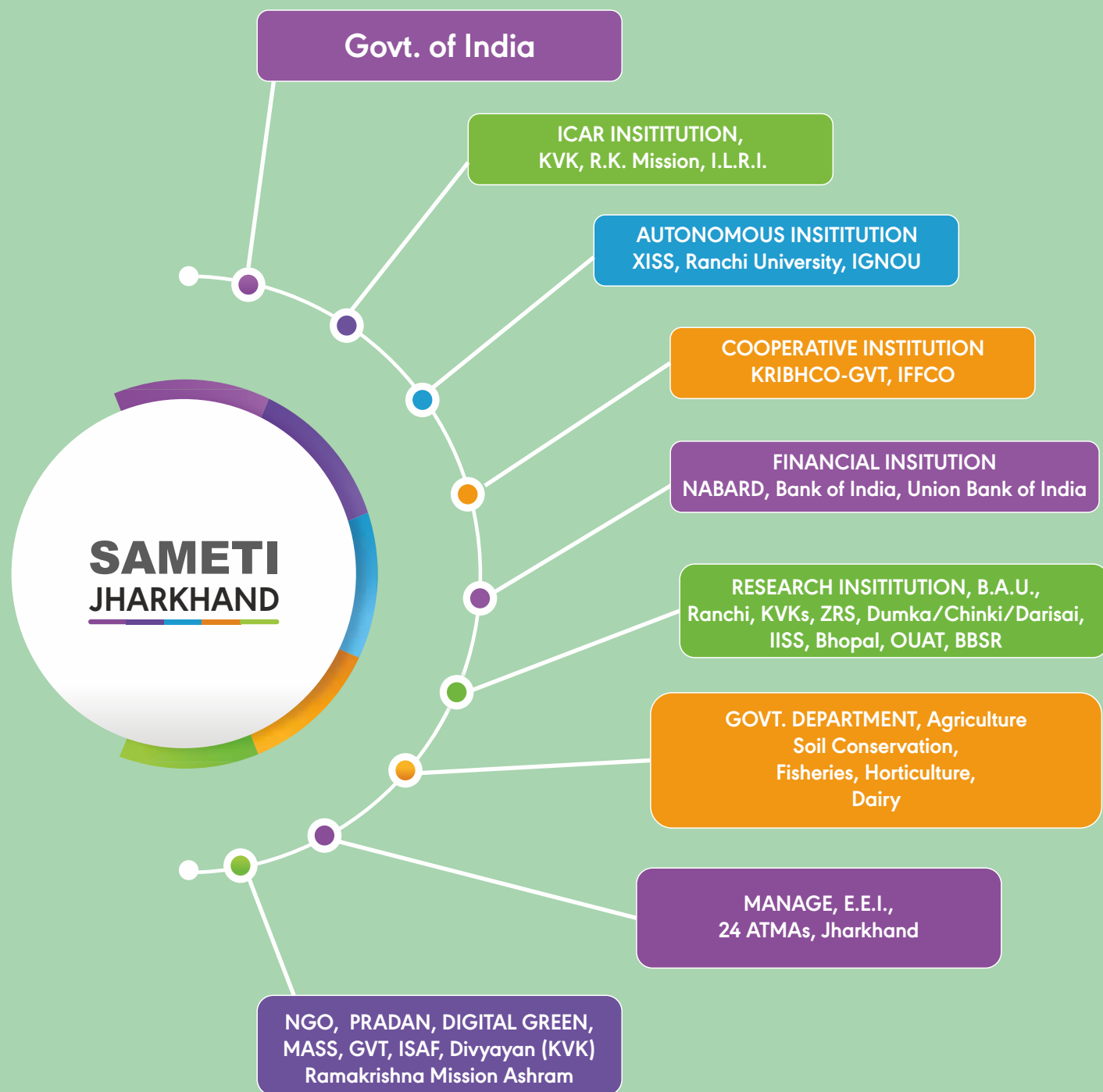
SAMETI is helping ATMAs to strengthen this linkage by deputing scientists from BAU, Ranchi, ZRS, Dumka, Chianki and Darisai and KVK, Jagannathpur after taking help and guidance from the University.

SAMETI is working on the following lines for improvement in R-E-F-M linkage.

1. Preparing technical bulletin for extension workers and farmers of ATMA districts.
2. Participation of research scientists in the ATMA GB as well as ATMA management committee.
3. Active participation of KVK/ZRS scientist in the participatory Rural Appraisal as a member of the core team entrusted with the responsibility of finalizing Strategic Research and Extension Plan.
4. Organization of demonstrations and awareness programmes for the farmers on new technologies.
5. Mainstreaming the long term researchable issues with the production system research or mission mode research or other channels of research to be funded through ICAR/BAU.
6. Organizing district level (ATMA) workshops on Research-Extension-linkage to discuss about researchable issues under the SREP and follow up the progress made on the same.

7. LINKAGE WITH INSITITUTION

SAMETI has established linkage with various local as well as National insitutions.



8. PROCESSES INTRODUCED

- Training programme on various aspects on Agriculture Extension Management introduced in the State.
- Better Research-Extension-Farmer-Market Linkage.
- Improved use of IT & ICT in Technology spread.
- Website for SAMETI, Department of Agriculture and its linkage with ATMA districts.
- Exposure visits on frontier areas of Agricultural development initiated in collaboration with Centre for Agriculture & Rural Development, New Delhi.

9. INSTITUTIONAL SUSTAINABILITY

SAMETI has initiated following steps to move towards institutional sustainability under Extension Reforms:

- Charging Token Money for Training/Workshop/Exposure Visit.
- Charging for audio visual aids provided by SAMETI.
- Priced Technical Bulletin/Publication. As well as charging for conference room facilities.
- Institutional charges @10% is being provided by State Govt. for sponsored programmes.

10. TASK AHEAD

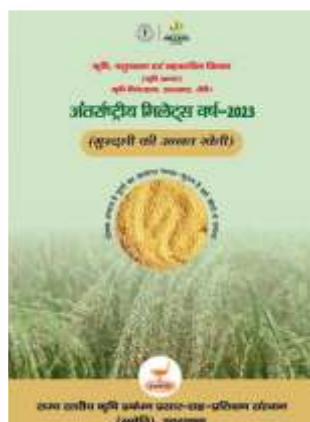
- Closer linkage among ATMA, SAMETI & State Departments/SAU/ICAR.
- Greater Role of mass media in technology dissemination.
- Frequently use of ICT applications in agriculture and allied sectors.
- Improved & effective communication among Scientist-Extension-Farmers personnel.
- Propagating and integrated farming system approach.
- Organise farmers groups for fulfilment their needs and requirements.
- Agro ecological based management system and extension reforms.

11. FUTURE CHALLENGES

- Innovative marketing strategy.
- Continuous technology up gradation.
- Healthy credit growth.
- Effective system dominated work culture.
- Improving organizational set up.
- Implementation of modern technology with respect to increase productivity
- Proper organise the supply chain

12. PUBLICATIONS

- SAMETI Newsletter 2023-24
- Folder Kisan upyogi Mahatwapurna, Yojna
- Booklet Dalhani ke Pramukh Kit, Bimariyan Evam Unki Roktham
- Booklet Dalhani Faslo ki Unnat Krishi Pranali
- Kodo ki Unnat Krishi Pranali
- Bazra ki Unnat Krishi Pranali
- Madua ki Unnat Krishi Pranali
- Gundli ki Unnat Krishi Pranali
- Kangani ki Unnat Krishi Pranali
- Vinyals



13. POST GRADUATE DIPLOMA IN AGRICULTURAL EXTENSION MANAGEMENT

There has been a shift in focus from subsistence to commercial agriculture thereby increasing the farmers' need for advanced technologies. The demand on the public extension system for dissemination of up-to-date technology called for up gradation of both technical and extension skills of extension functionaries. The present day extension functionaries performing multifarious activities besides extension work are not adequately equipped to shouldering the responsib for effective delivery of agriculture information.

In order to professionalise the public extension service for effective delivery of extension servicess, a Post Graduate Diploma in Agricultural Extension Management (PGDAEM) has been launched for the agriculture extension functionaries. It is expected that the diploma holders would form a professional cadre of farm advisors to take forward the agenda of agriculture extension. The programme, launched on 27th October 2007 for the public extension functionaries in distance learning mode, is sponsored by Department of Agriculture and Cooperation, Ministry of Agriculture, Government of India. The programme would cover the extension personnel from the districts where Agriculture Technology Management Agency (ATMA) have been established and functioning.



Objectives of the PGDAEM Programme



To enhance the techno-managerial competence of extension functionaries



To acquaint the extension functionaries on the latest developments in the field of agricultural extension



To equip the extension functionaries with the tools and techniques for participatory decision making.



To develop an insight into various extension models to enrich the agri-value chain.

Course Structure and Contents:

The programme has 30 credits and will be offered in two semesters. Each semester will have 15 credits. One credit is equal to 30 hours of study. The programme will have five courses with five assignments, one in each course in the 1st semester and four courses with one assignment in each course and a project work in the 2nd semester. programme is supported with printed reading material, Lecture series-cum-contact classes and e-learning resources on the MANAGE website. The Lecture series-cum-contact classes will be organized at State Agricultural Management & Extension Training Institutes (SAMETIs) or any identified institute of the respective State for five days in each semester, well in advance of the commencement of examinations.

Framework of courses for semester I & II

Semester I

Course No.	Name of the Course	Credits
AEM 101:	Introduction to Agricultural Extension	(3 credits)
AEM 102:	Facilitation for Development	(2 credits)
AEM 103:	Communication for Development	(4 credits)
AEM 104:	Gender Mainstreaming for Agricultural Development	(3 credits)
AEM 105:	Leadership and Management Skills	(3 credits)

Semester II

Course No.	Name of the Course	Credits
AEM 201:	Rural Sociology	(2 credits)
AEM 202:	Farm Business Management	(4 credits)
AEM 203:	Planning for Agricultural Management	(3 credits)
AEM 204:	Extension for Sustainable Agricultural Development	(3 credits)
AEM 205:	Project Work	(3 credits)

General Information:

Eligibility Criteria:

Extension functionaries graduated in Agriculture and allied sectors such as Horticulture, Veterinary, Fisheries etc. and other Graduates currently employed in the departments of Agriculture/ Allied sectors of Central/ State/ UT Governments and State Agricultural Universities (SAUS), Block & Assistant Technology Managers (BTMs & ATMs) of ATMA and Subject Matter Specialists (SMSs) of Krishi Vigyan Kendras (KVKs) are eligible to enroll for the programme. Preference will be given to government extension functionaries in the above Departments.

All Graduates in Agriculture, Allied subjects and other Graduates working in Agri-business companies, NGOs, Cooperatives, Farmers' Organizations, entrepreneurs Agri- and Input dealers are also eligible.

Status of PGDAEM Programme from 2007-08 to 2022-23

Session	No. of District	No. of Candidates	No. of Successful Candidates
2007-08	9	78	60
2008-09	20	133	103
2009-10	13	67	54
2010-11	10	33	31
2011-12	4	8	7
2012-13	13	74	61
2013-14	16	92	81
2014-15	14	88	64
2015-16	11	27	20
2016-17	06	23	11
2017-18	11	55	46
2018-19	13	54	40
2019-20	10	27	15
2020-21	05	17	09
2021-22	08	43	40
2022-23	11	66	Under process
Total		885	642

14. SKILL TRAINING OF RURAL YOUTH (STRY)

1. INTRODUCTION

"Skill Training of Rural Youth (STRY)", aimed at imparting skill-based training to rural youth on agri-based vocational areas in compliance with National Policy on Skill Development & Entrepreneurship-2015 in agriculture & allied areas to promote employment in rural areas.

2. OBJECTIVES

- (i) Offer Modular skill training opportunities to rural youths including farmers and farm-women, based on location needs.
- (ii) Create a pool of skilled manpower to perform farm and non-farm operations.

3. TARGET GROUP

Rural youth of the age group of 18 years and above with minimum qualification, preferably 5th standard, however, the minimum qualification is not mandatory. In years 2023-24 under STRY programme Total 96 Training Programme are conducted in 24 District of Jharkhand and 2880 young farmer are benefited.



15. DIPLOMA IN AGRICULTURAL EXTENSION SERVICES FOR INPUT DEALERS (DAESI)

Introduction

The National Agricultural Policy and 10th Plan approach paper stressed the need for reforms in agricultural extension of the country. Ministry of Agriculture, Government of India emphasized the use of Multi Agency Extension Services such as Multi National Companies, Corporate Bodies, Voluntary Organizations, Farmers Associations and Input Dealers etc. in transfer of technology.

There is a large network of about 1200-1500 Agri-Input Dealers in the State, who are an important source of Farm Information to the Farming Community. Nearly 90% of the Agri-Input Dealers operating in our country does not have any formal Agricultural Education. They seldom realize the implication of "Laws" related to handling Agricultural Inputs. They are basically businessmen and know about different market forces. If they are transformed as para-professionals by providing required knowledge, they can make Market Led Extension, a reality and thereby bring a paradigm shift in Indian Agriculture.

MANAGE, Hyderabad has taken a very effective step to enhance the knowledge of input dealers through distant learning and it is running one year course for enhancing the agricultural as well as communication skill.

Jharkhand is a state where farmer as well as Input dealers lacking of proper knowledge about the agricultural inputs. Most of the time farmers go for wrong medicines and the Input dealers supply inappropriate medicines. Due to lack of presence of excellent advisor at village or panchayat level they go to take the advice from the Input dealers. But they failed to take specific solution on the other hand, the input dealers at panchayat or block level have very low turn over of their sale and where they lack handsome amount so as to spend on knowledge enhancement and other beneficial things.

Objective

- Orientation on location specific crop production technologies of broad based agriculture and specific package of practices related to field problems.
- Capacity building of Input dealers in efficient handling of Inputs.
- To impart the knowledge about the laws governing regulation of Agricultural Inputs.
- To make them effective source of farm information at village level (one stop shop) for the farmers / farm women.



Methodology

Distance Education mode was adopted with class room interactions and field visits on every Sunday (market holiday) for 48 Sundays approximately. Supply of study material, using multi-media instructional devices with the help of experts in the field as Resource Persons was also adopted. As indicated in the HRD Project Report of Indira Gandhi National Open University (IGNOU), under Distance Education mode, a diploma course requires 32 credit hours and each credit hour is equal to 30 hours of the study time of the participant. DAESI programme is covering about 36 credit hours.

Contents and Coverage

- The course is so designed to suit the requirement of input dealers and prospective dealers of 10 standard.
- To make the dealers technically more competent, topics like agro-climatic conditions, soils, soil analysis, land use planning, Integrated Nutrient Management (INM), Integrated Pest Management (IPM) and Crop Production Technology in respect of all crops being grown in the district, including horticultural crops, vegetable crops, floriculture, Farm mechanization etc., were included in course.
- To improve Communication Skills, few lectures on Extension Education, Extension Methods, diffusion and adoption of innovation, Role of Mass Media etc. were dealt.
- For individual development, few topics on Importance of Meditation for mind control and thought process, Business Principles, Business Ethics were taught. General topics like National Integration, Privatisation, Liberalization, Globalisation, WTO regime etc. were also covered.
- To make them to discharge regulatory responsibilities enjoined on them, Laws related to Agricultural Inputs, E.C. Act, Consumer Protection Act, Limitation Act, C.P.C., Cr. P.C. etc., were dealt at length.

Duration : One year

Course Fee : Rs. 20000/- in lump sum at a time of admission

Current Status of DAESI in Jharkhand

As a part of Memorandum of Understanding (MoU) with MANAGE, Hyderabad, SAMETI, Jharkhand launched the DAESI Course in two center on pilot basis i.e. one at Ranchi and other at East Singhbhum involving 40 dealers each which is under implementation with the funding support from RKVY. At present 6 Districts involving 240 in collaboration with concerned district ATMA.

Status of Diploma in Agricultural Extension Services for Input Dealers (DAESI) in Jharkhand 2023-24

Model of Finance	Approved DAESI Centre for 2023-24	Remarks
Self Finance	01 (ATMA Ranchi)	
Combined Mode	05 (SAMETI, ATMA Garhwa, Sahebganj, East Singhbhum, West Singhbhum)	Classes Ongoing



16. SAMETI WEBSITE



The screenshot shows the SAMETI website homepage. At the top, there is a navigation bar with links for Home, About Us, Training, Schemes, Recent News, Success Story, Publications, Soil Maps, Gallery, and Contact Us. Below the navigation bar, there is a large banner image showing a group of people in traditional attire. The banner text reads "Birsa Kissan Rath" and "SAMETI Samachar Patrika/Booklets". Below the banner, there is a section titled "Tender / Vacancy" with a table of tenders. To the right of the table, there are sections for "FROM SEC'S DESK", "FROM SNO'S DESK", "FROM DIR'S DESK", and "LINKS".

Sno	Particulars	Bid Document 1	Bid Document 2	Document 1	Document 2
7	Scrutiny Report of Dy PD Mohi	PRD News	BID Document		
6	Scrutiny Report State Coordinator and Accountant Mohi	PRD News	BID Document		
5	Tender Document (Purchasing of Lab furniture for Quality Control Fertilizer Lab, Ranchi).	PRD News	BID Document		

FROM SEC'S DESK:
Mr. Aboobacker Siddique P, (IAS)
Secretary Agriculture

FROM SNO'S DESK:
Sri. Kumar Tarachand, (IAS)
Director Agriculture Cum State Nodal Officer

FROM DIR'S DESK:
Sri. Vikash Kumar
Director SAMETI

LINKS:
National Institute of Agricultural Extension Management (MANAGE)
Post Graduate Diploma in Agricultural Extension Management (PGDAEM)
Diploma in Agricultural Extension Services for Input Dealers (DAESI)
Kisan Call Center

- www.sameti.org
- State Profile
- What is SAMETI
- Mandate
- Training Methodology
- Downloads
- Success Stories
- Specific Objectives
- Publication - Since 2018-19 to 2023-24
- Recent News
- Training Calendar - Since 2003-04 to 2017-18
- Scheme & Courses
- Contact Us
- Who's Who
- Photo Gallery
- Important Circulars
- District Wise Soil Maps of Jharkhand
- SAMETI News - Newsletter of SAMETI (Half Yearly)
- Agricultural Technology Management Agency (ATMA)
- DAESI (Diploma in Agricultural Extension Services for Input Dealers)- Candidates, Application
- For link for MANAGE sites

17.

26th January, 2024 Jhanki

On the auspicious occasion of 26th January, 2024 with the joint collaboration of SAMETI and District Agriculture Office Ranchi under Department of Agriculture, Animal Husbandry & Co-operative, Jharkhand Ranchi Presented his tableau on the theme of "Integrated Birsa Gram Vikash Yojna-cum-Krishak Pathshala" at Morabadi Stadium, Ranchi.

The main objective of this scheme is one Agricultural farm will be selected in every district. The following thing will be provided to each district:-

- Various cutting edge technologies.
- Modern farming equipment for horticulture, livestock rearing and fish farming.
- New techniques of irrigation

Through Jharkhand Integrated Birsa Gram Vikas Yojana-cum-Krishak Pathshala, farmers will also be given training and empowered to increase their income.

In this occasion other Departments of Jharkhand also presented their tableau.



18. Participation in National Workshop

"National workshop on Role of skill Development in Tapping Business Potential of Agriculture" is organized on dated 01-02 August, 2023 at National Institute of Agriculture Extension Management (MANAGE), Rajendra Nagar, Hyderabad, Telangana, India. In this workshop Sri. Vikash Kumar, Director SAMETI, Jharkhand, Sri Abhishek Tirkey, Dy Director (AEM) SAMETI, Sri Rakesh Kumar singh, Dy. Project Director (ATMA), Godda & Sri Saptami Kumar Jha, Dy Project Director (ATMA), Latehar were participated. Main objective of this workshop are:-

1. Discuss various aspects of skill development facilitating realization of full potential of agriculture and working out a strategy to take skill development to next level.
2. Conceptualizing skill requirement of present day agriculture and identification of skilling area.
3. Leveraging STRY for integrating rural youth with different development.
4. Schemes and programs of the Government with focus on entrepreneurship and market integration.



Shri Vikash Kumar, Director, SAMETI, Jharkhand brought forth a plethora of hands on strategies with potential to integrate rural youth with development schemes and programs of the Government. A concise recapitulation of the important points is given below –

- Discussed the need for market linkages to connect trained rural youth with local businesses and industries. Proposed partnership, trade fairs, and networking events as means to facilitate these connections to flourish.
- Proposed strategies to integrate STRY trainees with prominent market platforms like Big Basket, wholesale markets, and online markets.
- Stressed on the need for collective efforts in reaching to a wider market. There is need to encourage the development of start-ups and linking them with available credit options.
- There is need for exploring the concept of online marketing and its potential to reach a wider audience.



19. Participation in Annual Training Planning, Work Shop (ATPW-2024)

“Annual Training Planning, work Shop” (ATPW-2024) is organized on dated 09-10 January, 2024 at National Institute of Agriculture Extension Management (MANAGE), Hyderabad, Rajendranagar. In this workshop Smt. Kumud Kumari Dy. Director (Agri & Allied), SAMETI, Smt. Tripti Tirkey, Dy Project Director. ATMA Gumla & Smt. Geeta Kumari, Dy. Project Director, ATMA West. Singhbhum, were participated. The workshop is aimed to assess the training and capacity needs of extension Functionaries, share training calendar of MANAGE, EEs and SAMETI Proposed for the year 2024-25 and explore collaborative Programs /research projects. The output of this workshop will help MANAGE, EEs and SAMETIs to design and deliver demand driven training & capacity development programs/ research project.



20. TRAINING PROGRAMMES/WORKSHOPS ORGANIZED BY SAMETI, JHARKHAND DURING 2023-24

SL NO.	Date	Subject	Name of Collaborative Institute	No. of Participants
1	12-14 June, 2023	ICTs in Agricultural Marketing – Block Chain Technologies	SAMETI - MANAGE, Hyderabad Collaborative	72
2	25-27 July, 2023	Mass Media Skill to Agriculture Extension	SAMETI, Jharkhand	36
3	18-19 August, 2023	Meeting of GOI Officials and Digital Green Trust team along with Stakeholders at SAMETI Jharkhand	SAMETI-Ministry of Agriculture, GOI- Digital Green	30
4	11-15 Sep, 2023	Write Shop for Success Stories and News Letters	SAMETI - MANAGE, Hyderabad Collaborative	72
5	16-18 Oct, 2023	Development & Management of Agriculture Programme for AIR, Doordarshan, Print Media & Web portal	SAMETI - MANAGE, Hyderabad Collaborative	72
6	02 Nov, 2023	State Level Workshop on Digitalization of Agricultural Extension System (DAES)	SAMETI -Digital Green	40
7	04-08 Dec, 2023	Natural Farming for Sustainable Agriculture	SAMETI - MANAGE, Hyderabad Collaborative	97
8	12-14 Dec, 2023	Farmers Led Extension-Concept, Potential, Models and Experiences	SAMETI, Jharkhand	31
9	17-19 Jan, 2024	New Dimensions in Agricultural marketing	SAMETI - MANAGE, Hyderabad Collaborative	49
10	07-09 Feb, 2024	Effective use of ICTs and Social Media for Technology Transfer	SAMETI, Jharkhand	32
11	16 Feb, 2024	State Level Roll Out Workshop under Digitalization of Agricultural Extension System (DAES)	SAMETI -Digital Green	57
12	27-29 Feb, 2024	Promotion of Agriclincs & Agribusiness Centre Scheme through Agricultural Technology management Agency (ATMA)	SAMETI - MANAGE, Hyderabad Collaborative	30

21. INNOVATIVE ACTIVITIES

1. BIRSA KISAN RATH : Agriculture is a special extension technology, through which farmers are made aware of the new achievements of research. Analysis of the difficulties faced in the adoption of technologies shows that due to the lack of uniformity in the products and strains recommended by scientists and their utility and availability at the local level, the recommendations are not adopted. In this context, Birsa Kisan Rath plays an important role. In this light, keeping in view the interest of the farmers, Birsa Kisan Rath is being sent to various blocks of the state. A total of 48 Birsa Kisan Rath has been sent to 24 districts covering total of 206 blocks and 1593 panchayats from which 112144 farmers have been benefited which has coordinated with help of 602 BTM/ATM/VLW and 2392 farmer friends.



Birsa Kisan Rath 2023-24



Sl.No.	Name of District	Total No. Of Rath	Number of Block Covered	Number of Panchayat Covered	No. of Farmers Participated	No. of BTM/ATM/VLW Involved	No. of Farmers Friend Involved
1	Dumka	2	15	75	15930	58	56
2	Khunti	1	6	26	1343	21	80
3	Latehar	2	11	108	7214	36	145
4	Ramgarh	1	4	22	1853	12	20
5	Ranchi	3	14	173	8069	44	163
6	Simdega	2	3	57	3324	27	36
7	Hazaribag	3	7	62	5568	40	92
8	Pakur	1	4	43	988	23	44
9	Bokaro	2	5	43	2127	27	42
10	Chatra	2	5	39	1359	42	64
11	Giridih	3	7	53	4026	0	151
12	Dhanbad	2	3	33	2455	19	31
13	Koderma	1	1	4	465	1	7
14	Jamtara	1	3	29	1307	6	26
15	Deoghar	2	2	33	1293	12	80
16	Palamu	3	21	92	4944	55	300
17	East Singhbhum	2	11	39	9881	49	180
18	West Singhbhum	3	18	158	17428	3	208
19	Seraikella	2	9	100	6189	8	178
20	Garhwa	3	20	170	7469	11	245
21	Sahebganj	2	9	93	5156	26	103
22	Godda	2	9	62	2109	42	73
23	Lohardaga	1	7	52	1091	36	45
24	Gumla	2	12	27	556	4	23
TOTAL		48	206	1593	112144	602	2392

2. NUKKAD NATAK : To promote agricultural work through nukkad-natak, which is to be organized in all the districts of the state. Through this campaign, efforts will be made to make local farmers and farmer interest groups fully aware and responsible. Street theater will play an important role in providing good and quality technology to the farmers of our state and ensuring information about the scheme. To make the benefits of the beneficiary schemes of the Agriculture, Animal Husbandry and Co-operation Department available to the beneficiaries at one place, to promote the welfare schemes under the department, to increase awareness among the farmers/animal husbandry and to provide the benefits of the schemes through Door Step Delivery. To reach out to the people, there is a proposal to organize nukkad-natak in two Panchayats of all the blocks of the state.

The aim of nukkad-natak is to increase the income of farmers by providing new technical information to increase the crop cover as well as the productivity of crops. Objectives of organizing nukkad-natak:

1. Promotion of various schemes run by the department among the beneficiaries and ensuring maximum benefits of the schemes to all the farmers.
2. To make the benefits of various schemes available to the beneficiaries at their door step.
3. Agricultural and non-agricultural works related to increasing the income of farmers like to connect more and more farmers by making them aware about various schemes of animal husbandry and fisheries.



NUKKAD NATAK PROGRAM 2023-24				
Sl.No.	District	Total No. of Program	Total Held Program	Name of the Program Organized
1.	Bokaro	9	18	 <p>Government Schemes, Seed exchange and distribution scheme, seed treatment. Millet Mission, Natural Farming, JKRMY, PM-KISAN, KCC, PMKSY, Agriculture Extension, Fertilizer and Nutrition Security, Integrated Birsa Gram Vikas Yojana etc.</p> 
2.	Chatra	12	24	
3.	Deoghar	10	20	
4.	Dhanbad	10	20	
5.	Dumka	10	20	
6.	East Singhbhum	11	22	
7.	Garhwa	10	20	
8.	Giridih	13	26	
9.	Godda	9	18	
10.	Gumla	12	24	
11.	Hazaribagh	5	10	
12.	Jamtara	6	12	
13.	Khunti	6	12	
14.	Koderma	6	12	
15.	Latehar	9	18	
16.	Lohardaga	7	14	
17.	Pakur	6	12	
18.	Palamau	21	42	
19.	Ramgarh	6	12	
20.	Ranchi	18	36	
21.	Sahebganj	9	18	
22.	Seraikella	9	18	
23.	Simdega	10	20	
24.	West Singhbhum	18	36	
Total		242	484	

22. NEW SCHEMES

1. Virtually Integrated System to Access Agricultural Resources (VISTAAR)

To enhance and strengthen the agricultural extension system through the application of digital technology by expanding its outreach substantially and providing access to every farmer for high quality advisory services on production technologies, marketing, supply chain etc.

Project Coverage:

Ten States: Andhra Pradesh, Assam, Bihar, Jharkhand, Karnataka, Madhya Pradesh, Odisha, Rajasthan, Telangana, Uttar Pradesh

CRITERIA FOR SELECTION OF DISTRICTS

- Profile of the District w.r.t. Agriculture & allied activities.
- Performance level of KVKs.
- Digital literacy of farmers. Infrastructural facilities with ATMA.
- Existence of the implementing agency.

Jharkhand: Total No. of Districts selected for DAES Pilot Project is 11.

11 Districts: Chatra, Deoghar, Dumka, Giridih, Gumla, Hazaribag, Latehar, Ramgarh, Ranchi, Sahibganj & West Singhbhum.



2. Pilot Project on School Soil Health Programme

This programme undertaken by DA&FW in collaboration with DSE&L and State Governments in 20 schools (10 Kendriya Vidyalaya & 10 Navodaya Vidyalaya) in rural areas. Making aware students about soil health is important for sustainable agriculture practices and mother earth. Under the programme, soil samples were collected by School Students and soil testing were also done by students and SHCs were generated. Students also educated farmers about the recommendation of Soil health card for judicious use of fertilizer and crop recommendation, ATMA, KVKS, SRLM and team of State officials helped out the school students in the campaign. The entire activity has been documented in the soil health card portal. After completion of the pilot project, now, the school soil health programme is to be launched in 1000 schools.



LIST OF PILOT PROJECT ON SCHOOL HEALTH PROGRAM IN JHARKHAND

SI No	Name of School	District	Name of Local KVKs
1	Kendriya Vidyalaya	West Singhbhum	At+P.O. Jagannathpur, PS- Jagannathpur, West Singhbhum
2		Bokaro	KVK ,P.O. Peterwar (Near Block) Bokaro (CTPSChandrapura)
3		East Singhbhum	Vill- Darisai, (Kharia Colony), P.O. Barakhurshi, EastSinghbhum
4		Dumka	KVK, Dumka
5		Bokaro	KVK, P.O.-Petarwar (NearBlock) Dist Bokaro(KV Bokaro Thermal)
6		Ranchi	Divyayan Krishi Vigyan Kendra Ramkrishna Mission Ashrama, Morabadi, Ranchi
7	Navodaya Vidyalya Samiti (JNVs Selected)	Jamtara	JNV Jamtara
8		Gumla	JNV Ghagra, Gumla
9		Pakur	JNV Teliya Pokhar Mahespu, Pakur-1
10		East Singhbhum	JNV East Singhbhum
11		Deoghar	JNV Deoghar
12		Bokaro	JNV Bokaro
13		Garhwa	JNV Garhwa
14		Ranchi	JNV Ranchi
15		West Singhbhum	JNV West Singhbhum
16		Hazaribag	JNV Bonga, Hazaribag
17		Dumka	JNV Hansdiha, Dumka
18		Simdega	JNV Simdega
19		Koderma	JNV Puto, Koderma
20		Seraikela	JNV Sijulta, Seraikela
21		Chatra	JNV Chatra
22		Lohardaga	JNV Jogna, Lohardaga
23		Sahebganj	JNV Sahebganj
24		Godda	JNV Lalmatia, Godda
25		Latehar	JNV Latehar
26		Dhanbad	JNV Benagoria, Dhanbad
27	Eklavya Model Residential School	Dumka	Dumka,Kathijoria
28		Godda	Sunderpahari, Tasaria
29		Gumla	Basia, Solengbira
30		Lohardaga	Lohardaga, Kujra
31		Ranchi	Bundu, Salagdih
32		Sahebganj	Barhet, Bhognadih
33		West Singhbhum	Khuntpani, Torsundari

23. Food & Nutrition Security (Krishonnati Yojana) & NFSM- Edible Oil (Oilseeds)

Introduction

Food & Nutrition Security and NFSM Edible oil Oilseeds (National Food Security Mission) is central sponsored scheme. In this scheme Pulses, Rice, Coarse cereals, Nutri cereals T.R.F.A. (Pulses) & T.R.F.A. (Oilseeds) as well as Oilseeds are included. To increase the production of Rice, Pulses, Coarse cereals, Nutri cereals and Oilseeds through area expansion and productivity enhancement in a sustainable manner. During 2015-16 this scheme is implemented as 60:40% (Central: State) sharing pattern.

Objectives

- Increasing production of rice, pulses, coarse cereals and Nutri-Cereals through area expansion and productivity enhancement in a sustainable manner in the identified districts of the country.
- Restoring soil fertility and productivity at the individual farm level.
- Enhancing farm level economy (i.e. farm profits) to restore confidence amongst the farmers.
- The availability of edible oils by increasing the production and productivity of oilseeds.

Implementing Districts

1.	Food & Nutrition Security (Krishonnati Yojana) -Rice	04 Districts (Gumla, West Singhbhum, Seraikella, Dumka)
2.	Food & Nutrition Security (Krishonnati Yojana) -Pulses	(All 24 Districts)
3.	Food & Nutrition Security (Krishonnati Yojana) -Coarse Cereals	12 Districts (Ranchi, Hazaribagh, Giridhi, Chatra, Garhwa, Palamu, Latehar, Dumka, Deoghar, Pakur, Godda, Jamtara)
4.	Food & Nutrition Security (Krishonnati Yojana) -Nutri Cereals	(All 24 Districts)
5.	Targeting Rice Fallow Area (TRFA) - Pulses	05 Districts (Ranchi, West Singhbhum, Palamu, Chatra, Dumka)
6.	NFSM- Edible Oil (Oilseeds)	12 Districts (Khunti, Seraikella, Chatra, Koderma, Garhwa, Palamu, Latehar, Dumka, Godda, Pakur, Sahibganj, Jamtara)
7.	Targeting Rice Fallow Area (TRFA) - Oilseeds	05 Districts (Ranchi, West Singhbhum, Palamu, Chatra, Dumka)



Achievements under Food & Nutrition Security & NFSM – Edible Oil (Oilseeds) during 2023-24

A. Food & Nutrition Security

- 16450 ha area covered under Demonstration which covers 41165 farmers (Rice - 999 ha, Pulses - 5079 ha, Coarse cereals - 1340 ha, and TRFA Pulses - 9032 ha).
- 23751 Agricultural Implements distributed among 11637 Farmers (Pumpset - 1313, Rotavator - 257, Sprayers - 8991, Multi crop Thresher- 39 & other implements - 1037).

B. NFSM- Edible Oil (Oilseeds)

- 6499 ha area covered under Demonstration which cover 19650 farmers (Edible Oil Oilseeds - 3674 ha and TRFA Oilseeds - 2825 ha).
- 3357 Agricultural Implements distributed among 1933 Farmers (Pumpset - 554, Rotavator - 159, Sprayer - 946 & other implements - 274).



24. OFFICIAL STATUS OF SAMETI JHARKHAND

SL NO.	DESIGNATION	NAME OF OFFICER	MOBILE
1.	DIRECTOR SAMETI, JHARKHAND	SRI. VIKASH KUMAR	8210977085
2.	FACULTY/DY. DIRECTOR (A.E.M.), SAMETI	SRI. ABHISHEK TIRKEY	7070129443
3.	FACULTY/DY. DIRECTOR (AGRI. ALLIED), SAMETI	MRS. KUMUD KUMARI	9471349969
4.	TECHNICAL ASSISTANT (STATE) F & NS, JHARKHAND	MRS. NEERU RANI KACHHAP	9431362046
5.	ACCOUNTANT CUM CLERK, SAMETI, JHARKHAND	SRI. SUJIT KR. SINGH	9334197221
6.	COMPUTER OPERATOR, SAMETI, JHARKHAND	SRI. PARSHU RAM	8757619456

ON DEPUTATION AT SAMETI JHARKHAND

1.	GRADUATE INSTRUCTOR E.T.C. HEHEL, Ranchi	SRI. SANJAY KUMAR SRIVASTAVA	94315207070
2.	B.T.M. ATMA GARHWA	SRI. HARSHRAJ MISHRA	9570913715
3.	B.T.M. ATMA EAST SINGBHUM	SRI. SANDHIR KR. KHALKHO	7759953979
4.	A.T.M. ATMA PALAMU	SRI. ANKIT KR. PANDEY	7903485724
5.	A.T.M. ATMA SIMDEGA	MRS. NEHA NIBHA TETE	9973900726
6.	A.T.M. ATMA SARAIKELA	SRI. RAKESH KUMAR	9304913285
7.	A.T.M. ATMA LOHARDAGA	SRI. VIJAY ALOUKIT RUNDA	9334440678
8.	A.T.M. ATMA GUMLA	SRI. NAZIRULL ANSARI	8210240221
9.	TECHNICAL ASSISTANT (F & NS SARAIKELA)	SRI. MANISH GURIA	9431544323

OFFICIAL STATUS OF 24 ATMA DISTRICTS OF JHARKHAND

Contact Details of ATMA Officials										
Sl.No.	District	Project Director	Mobile No.	Dy. Project Director	Mobile No.	Accountant	Mobile No.	Computer Operator	Mobile No.	
1	Bokaro	Umesh Tirkey	9430357752	Lutbaran Mahto (Incharge)	6201237202 8228945453	Nimai Prasad Sao	9097307193 7004065984	Sumit Kumar Singh	7717743824	
2	Chatra	Nikhata Praveen	9661278611	Rajesh Kumar Singh (Incharge)	7004374167	Prem Kumar Sinha	8789357345	Amit Kumar Sinha	9608339491	
3	Deoghar	Ashok Samrat	8987673007 8102213741	Mantu Kumar	8789843767	Vikramjit	6207735887	Chandra Sekhar Poddar	9304914872	
4	Dhanbad	Shiv Kumar Ram	9939156590	Anup Manish Lakra (Incharge)	9905160958	Mukesh Tiwari	7004472074	Karma Munda	8340775077	
5	Dumka	Sanjay Kumar Mandal (Incharge)	7903688345 9939626689	Deepak Chandra Sah (Incharge)	7004539963	Prakash Panda	8709328469	Ranvir Singh	9955383482	
6	East Singhbhum	Deepak Kumar	7972003235	Vijay Kumar Singh	9431970068, 7004138117	Nilam Jonko	9709875551	Arijun Soren	7979784731	
7	Garia	Shiv Shankar Prasad	9931113690	Yogendranath Singh (Incharge)	9570779656	Dilip Singh	9572553557	Md. Sameer	9546453407	
8	Giridih	Surendra Singh	9572859220	Rakesh Kumar Singh	8825307914	-	-	Sudhir Prasad Verma	7004810824	
9	Godda	Mukesh Kumar	8084117889	Rakesh Kumar Singh	8825307914	Virendra Pratap Verma	8873161630	Viswajeet Kumar	7870478558	
10	Gumla	Vijay Kujur	9570087117	Tripti Tirkey	7781975197	Priyanka Verma	8409155688	Anup Kuldeep Bara	6204963217	
11	Hazaribag	Anuranjan (Incharge)	9431903511 8709239201	Rajnish Anand (Incharge)	7050074000	Vinay Kumar Sinha	8789251820	Ramkrishn Sharma	8409106110	
12	Jamtara	Love Kumar	9330257038	Sanjay Kumar Singh	9835325158	Ganesh Kumar	8102282246	Faridujamma	9572350621	
13	Khunti	Anuranjan	9431903511 8709239201	Amresh Kumar (Incharge)	7004978245, 9905128309	Suhawan Basant Herenj	9709133108	Satish Soren	9771506125	
14	Koderma	Brahmadeo Shah	9934156377	Promod Kumar (Incharge)	9934159474	Ravindra Kumar	9430351830 8789538215	Mukesh Kumar Pandey	8789380264	
15	Latehar	Diwesh Kumar Singh	9431450469 820381585	Savita Oraon (Incharge)	7320879741	Bhola Kumar	8809941599	Mahanand Bhagat	8986715344	
16	Lohardaga	Shivpujan Ram	8084438089 9431325924	Mohit Singh	7761994451	Mousami Devi	6204076462	Karun Kumar	7909096283	
17	Pakur	Arun Kumar	8340195782	Arvind Kumar Rai	7979939464, 9572360077	Sanjay Kumar Chaudhry	9955361421	Md. Mehbub Alam	7004161860	
18	Palamau	Bibek Birua	9934958010	Praveen Raj (Incharge)	9534216434	Manoj Kumar	9431136980	Surendra Kumar	9304229626	
19	Ramgarh	Pravin Kumar Singh (Incharge)	9341342485	Dinesh Kumar Rajwar (Incharge)	7781927933	Vijay Kumar Ravi	6206989367	Sandeep Sharma	8210805383	
20	Ranchi	Ram Shankar Prasad Singh	9431427940	Saptami Kumar Jha	7543903898	Manoj Kumar	7991158673	Amit Ranjan Sinha	9508200268	
21	Sahibganj	Promod Ekka	9801583577	Ajay Kumar Puri (Incharge)	8409693404	Soni Kumari	6203929811	Pradeep Kumar Verma	6299306442	
22	Seraikella	Sanjay Kumar	7004298065	Vijay Kumar Singh	9431970068, 7004138117	Amrendra Kumar Sahu	7004823248	Mukesh Kumar	9470353423	
23	Simdega	Krishna Bihari (Incharge)	8252114657	Kumar Saurav (Incharge)	7978959043, 8280529748	Manish Kumar Gupta	9386356513	Alok Albel Kulla	9546285940	
24	West Singhbhum	Kalipad Mahato	9431167217	Geeta Kumari	9934174702	Santosh Prasad	9234786675	Sabbir Hashim	9304454982	

25. WEBSITE AND E-MAIL ADDRESS OF ATMA DISTRICTS, SAMETI, SECRETARY, DIRECTOR, DEPARTMENT OF AGRICULTURE, ANIMAL HUSBANDRY & CO-OPERATIVE , GOVT. OF JHARKHAND

Sl.No	Name of ATMA districts	E-Mail Address	Web Site
1	Bokaro	atmabokaro@gmail.com	www.atmabokaro.org.in
2	Chatra	atmactr@rediffmail.com	www.atmachatra.org.in
3	Deoghar	atmadeoghar@rediffmail.com	www.atamadeoghar.in
4	Dhanbad	atmadhanbad@gmail.com	www.atmadhanbad.co.in
5	Dumka	atma_dumka@rediffmail.com	www.atmadumka.org.in
6	East Singhbhum	atmaeastsinghbhum@gmail.com atmajsr321@gmail.com	www.atmapurbisinghbhum.org.in
7	Garhwa	atmagarhwa2007@gmail.com agriculturegarhwa2015@gmail.com	www.atmagarhwa.org
8	Giridih	atma20giridih@rediffmail.com	www.atmagiridih.co.in
9	Godda	atmagodda@gmail.com	www.atmagodda.org.in
10	Gumla	atmagumla@rediffmail.com	www.atmagumla.org.in
11	Hazaribagh	atma_hazaribag@rediffmail.com	www.atmahazaribagh.org
12	Jamtara	atmajmt@gmail.com	www.atmajamtara.org.in
13	Khunti	atmakhunti@gmail.com	www.atmakhunti.org.in
14	Koderma	atmakoderma2009@rediffmail.com	www.atmakoderma.org.in
15	Latehar	atmalatehar@gmail.com	www.atmalatehar.in
16	Lohardaga	atma.lohardaga@rediffmail.com	www.atmalohardaga.co.in
17	Pakur	atma_pkr@rediffmail.com	www.atmapakur.co.in
18	Palamau	atmapalamau@rediffmail.com	www.atmapalamau.org
19	Ramgarh	atmaramgarh@gmail.com	www.atmaramgarh.org.in
20	Ranchi	atmaranchi@gmail.com atmaranchi_123@rediff.com	www.atmaranchi.in
21	Sahebganj	atmasahibganj@rediffmail.com	www.atmasahebganj.in
22	Seraikella	atmaseraikella@yahoo.co.in	www.atmaseraikella.org
23	Simdega	nfsmsimdega@gmail.com atma_simdega@yahoo.in	www.atmasimdega.in
24.	West Singhbhum	atmachai basa@yahoo.com	www.atmachai basa.in
25.	SAMETI Jharkhand	sametijharkhand@rediffmail.com nfsmjharkhand@gmail.com	www.sameti.org
26.	Secretary (Agriculture)	jhagriculture@gmail.com	
27.	Director (Agriculture)	directoragriculturejh@gmail.com	

26. PHYSICAL AND FINANCIAL ANNUAL PROGRESS REPORT ON THE IMPLEMENTATION OF EXTENSION REFORMS SCHEME 2023-24, UPTO 31ST MARCH 2024

1. Name of State/ District: Jharkhand
2. Number of ATMA Districts: 24
3. No. of ATMA Blocks : 263
4. Meetings

(I) – SLSC

S.No.	Date of Meeting	Important Decisions taken
5.1	30.05.2023	Approval of SEWP 2023-24

(II) – IDWG

S.No.	Date of Meeting	Important Decisions taken
5.2	12.06.2023	(To be enabled for State level only)

(III) – ATMA GB

S.No.	Date of Meeting	Important Decisions taken
5.3	24	(To be enabled for District level only)

6. Programmes/ Activities

S.No	Activities	Physical		Financial	
		T	A	AA	E
(1)	(2)	(3)	(4)	(5)	(6)
A.	STATE LEVEL :				
A.1	Monitoring & Evaluation				
	a) Quarterly review workshops and RE Interfaces (Pre-seasonal)	02		1.50000	
	b) Concurrent Monitoring & Evaluation			6.00000	
	c) Expenses for IDWG including TA,DA, hiring of vehicle/POL & contingencies for SNO and State Coordinator			8.50000	
A.2	a. Training (Inter State/SAMETI level)				
	No. of Training programmes #	04	04	8.70000	4.13034
	No. of participants Male	Gen.	21	10	
		SC	12	06	
		ST	26	13	
		OBC	19	10	
		Min.**	06	03	
		Total:	84	42	
	No. of participants Female	Gen.	09	04	
		SC	05	03	
		ST	11	05	
		OBC	08	04	
		Min.**	03	02	
		Total:	36	18	
	GRAND TOTAL:		120	60	
	No. of man days*		360	180	

b. Induction Training					
No. of Training programmes #		01	01	0.90000	0.90000
No. of participants Male	Gen.	06	06		
	SC	03	03		
	ST	06	06		
	OBC	05	05		
	Min.**	01	01		
	Total:	21	21		
No. of participants Female	Gen.	02	02		
	SC	01	01		
	ST	03	03		
	OBC	02	02		
	Min.**	01	01		
	Total:	09	09		
GRAND TOTAL:		30	30		
No. of man days*		90	90		
c. Refresher Training					
No. of Training programmes #		01	01	0.90000	0.90000
No. of participants Male	Gen.	06	06		
	SC	03	03		
	ST	06	06		
	OBC	05	05		
	Min.**	01	01		
	Total:	21	21		
No. of participants Female	Gen.	02	02		
	SC	01	01		
	ST	03	03		
	OBC	02	02		
	Min.**	01	01		
	Total:	09	09		
GRAND TOTAL:		30	30		
No. of man days*		90	90		
d. Development of Quality Resource Material for training & HRD Interventions (no. of workshop days)		01		0.45000	
A.3	Exposure visits				
- No. of Exposure Visits		01		0.40000	
No. of participants Male	Gen.	02			
	SC	01			
	ST	03			
	OBC	01			
	Min.**	00			
	Total:	07			
No. of participants Female	Gen.	01			
	SC	01			
	ST	01			
	OBC	00			
	Min.**	00			
	Total:	03			
GRAND TOTAL:		10			
No. of man days*		40			

A.4	State level Exhibitions/ Kissan melas/ etc.				
	- Number of events				
	Number of visitors Male	Gen.			
		SC			
		ST			
		OBC			
		Min.**			
		Total:			
	Number of visitors Female	Gen.			
		SC			
		ST			
		OBC			
		Min.**			
		Total:			
GRAND TOTAL:					
A.5	Krishi Expo/ Regional Fairs-Organized/ supported by DAC				
	- Number of events				
	No. of Participants Male	Gen.			
		SC			
		ST			
		OBC			
		Min.**			
		Total:			
	No. of Participants Female	Gen.			
		SC			
		ST			
		OBC			
		Min.**			
		Total:			
GRAND TOTAL:					
A.6	Awards for best performing district ATMA				
A.7	a. Farmer Awards (numbers)		01		0.50000
	• State level				
	• District level		02		0.50000
	b. Incentive for Exemplary Extension work at District/Block Level				
	c. Incentivizing Scientist and Ext. Personnel				
	d. Lumpsum Grant for PPP Model				
A.8	(a) Operational Expenses			7.34635	7.34635
	(b) Number of Success Stories documented			1.00000	1.00000
	(c) Vehicle hiring & POL			1.00000	1.00000
	Non – Recurring		01	4.00000	4.00000
	(d) Equipment				
TOTAL (A.1 to A.8) \$				41.69635	19.27669

B.	DISTRICT LEVEL :				
I. Farmer oriented activities					
B.1	Developing/Revisiting SREPs (Numbers)				
B.2	Training of farmers				
	a) Inter State				
	o No. of Trainings		24	20	37.44000 29.54054
	No. of Participants Male	Gen.	104	86	
		SC	62	51	
		ST	131	109	
		OBC	97	80	
		Min.**	26	70	
		Total:	420	350	
	No. of Participants Female	Gen.	44	37	
		SC	26	22	
		ST	56	47	
		OBC	41	35	
		Min.**	13	09	
		Total:	180	150	
	GRAND TOTAL:		600	500	
	No. of man days*		3000	2500	
	b) Within State				
	- No. of Trainings		21	19	26.25000 21.05393
No. of Participants Male	Gen.	91	82		
	SC	54	49		
	ST	115	104		
	OBC	85	77		
	Min.**	23	21		
	Total:	368	333		
No. of Participants Female	Gen.	39	35		
	SC	23	21		
	ST	49	44		
	OBC	36	33		
	Min.**	10	09		
	Total:	157	142		
GRAND TOTAL:		525	475		
No. of man days*		2625	2375		

	c) Within District level- i) Residential					
	o No. of Trainings					
	No. of participants Male		Gen.			
			SC			
			ST			
			OBC			
			Min.**			
			Total:			
	No. of participants Female		Gen.			
			SC			
			ST			
			OBC			
			Min.**			
			Total:			
	GRAND TOTAL:					
	No. of man days*					
	c) Within District level-ii) Non-Residential					
	o No. of Trainings		109	106	39.24000	37.56431
	No. of participants Male	Gen.	565	550		
		SC	336	327		
		ST	716	696		
		OBC	527	511		
		Min.**	144	142		
		Total:	2289	2226		
	No. of participants Female	Gen.	242	235		
		SC	144	140		
B.3	Organizing Demonstrations					
	No. of Demonstrations					
	(a) Agriculture		526	514	21.04000	19.25056
	(b) Allied Sectors-(i) AHD&F		67	64	2.68000	2.22772
	(ii) Horticulture					
	(iii) Sericulture					
	(iv) Poultry					
	(v) Fodder Production					
	(vi) Any Other (give specification)					
	Total					
	No. of individual farmers:-		593	578		
	No. of farmers Male	Gen.	103	100		
		SC	61	59		
		ST	130	127		
		OBC	95	93		
		Min.**	26	26		
		Total:	415	405		
	No. of farmers Female	Gen.	44	43		
		SC	26	25		
		ST	56	55		
		OBC	41	40		
		Min.**	11	10		
		Total:	178	173		
	GRAND TOTAL:		593	578		

B.4	Exposure Visits (EV):				
	a) Inter-state				
	○ No. of Exposure Visits		24	18	48.00000 34.00000
	No. of participants Male	Gen.	104	77	
		SC	62	46	
		ST	131	99	
		OBC	97	72	
		Min.**	26	91	
		Total:	420	315	
	No. of participants Female	Gen.	44	33	
		SC	26	20	
		ST	56	42	
		OBC	42	31	
		Min.**	12	09	
		Total:	180	135	
	GRAND TOTAL:		600	450	
	No. of man days*		4800	3600	
	(b) Within State				
	○ No. of Exposure Visits		22	18	8.25000 6.61352
	No. of participants Male	Gen.	95	77	
		SC	57	46	
		ST	121	99	
		OBC	88	72	
		Min.**	24	91	
		Total:	385	315	
	No. of participants Female	Gen.	41	33	
		SC	24	20	
		ST	52	42	
		OBC	38	31	
		Min.**	10	09	
		Total:	165	135	
	GRAND TOTAL:		550	450	
	No. of man days*		1650	1350	
	c) Within district				
	- No. of Exposure Visits		135	122	12.15000 11.68497
	No. of participants Male	Gen.	700	633	
		SC	417	377	
		ST	887	802	
		OBC	652	589	
		Min.**	179	161	
		Total:	2835	2562	
	No. of participants Female	Gen.	300	271	
		SC	179	161	
		ST	380	344	
		OBC	279	253	
		Min.**	77	69	
		Total:	1215	1098	
	GRAND TOTAL:		4050	3660	
	- No. of man days*		4050	3660	

B.5	Mobilization of farmer groups					
	a) Capacity building, skill development and support services					
	o No. of Groups formed	40	29	2.00000	1.24805	
	o No. of members benefitted	600	435			
	b) Seed money /revolving fund					
	o No. of Groups provided seed money	13	07	1.30000	0.70000	
	o No. of members benefitted	195	105			
	c) Food Security Groups for Women					
	o No. of Groups formed	54	25	5.40000	2.06680	
	o No. of members benefitted	810	125			
B.6	Rewards and incentives – o Best organized group representing different enterprises					
B.7	Farmer Awards (Numbers) o Block level					
II. Farm Information dissemination						
B.8	District level exhibitions, kisan melas, fruits/vegetable shows.					
	o No. of events		24	19	96.00000	69.28726
	Total No. of visitors Male	Gen.	2075	1643		
		SC	1235	978		
		ST	2629	2081		
		OBC	1932	1530		
		Min.**	529	418		
		Total:	8400	6650		
	Total No. of visitors Female	Gen.	889	704		
		SC	529	419		
		ST	1127	892		
		OBC	828	656		
		Min.**	227	179		
		Total:	3600	2850		
GRAND TOTAL:		12000	9500			
B.9	a) Information Dissemination through printed Leaflets etc. & local advertisements		48	39	9.60000	7.98374
	b) Low cost publication		24	20	17.28000	13.66009
B.10	Technology packages developed		24	13	4.80000	2.59989
III. Agricultural Technology Refinement, Validation and Adoption						
B.11	a) Farmer Scientist Interactions at district level					
	o No. of interaction		48	46	9.60000	7.86716
	No. of farmers participated Male	Gen.	398	382		
		SC	237	227		
		ST	505	484		
		OBC	371	356		
		Min.**	102	97		
		Total:	1613	1546		
	No. of farmers participated Female	Gen.	171	164		
		SC	102	97		
		ST	216	207		
		OBC	159	152		
		Min.**	43	42		
		Total:	691	662		
	GRAND TOTAL:		2304	2208		
	b) Designated expert support from KVK/ SAU at district level.					

	c) Joint visit of Scientist & Extension Workers					
B.12	Organization of field days and kisan goshties					
	o No. of Field Days/Kisan Goshties organised		263	261	39.45000	36.99944
	No. of farmers participated Male	Gen.	2274	2256		
		SC	1353	1343		
		ST	2881	2859		
		OBC	2117	2101		
		Min. **	580	576		
		Total:	9205	9135		
	No. of farmers participated Female	Gen.	974	967		
		SC	580	575		
		ST	1235	1225		
		OBC	907	900		
		Min. **	249	248		
		Total:	3945	3915		
GRAND TOTAL:			13150	13050		
B.13	Assessment, refinement, validation and adoption of frontline technologies and other short term researchable issues through KVKs and other local research centres.					
	o No. of KVKs involved					
	o Issues/ trials allocated					
B.14	a) Operational expenses for including TA/DA at district level				18.19990	17.94463
	b) Hiring of vehicles & POL				15.45000	12.44036
	c) Operational expenses at block level.		20	16	6.00000	4.99593
	d) Operational Expenses for DFAC meeting		83	30	4.15000	1.12898
	e) Operational Expenses for BFAC meeting		138	63	3.45000	2.00594
	<u>Non – Recurring</u>					
	f) Equipment					
B.15	Farm Schools					
	a) Agriculture					
	b) AHD&F					
	c) Horticulture					
	d) Sericulture					
	e) Poultry					
	f) Fodder Production)					
	g) Any Other (give specification)					
	TOTAL:		263	256	77.35882	68.84076
Total (B.1 to B. 15)					505.08872	411.70458

C.	INNOVATIVE ACTIVITIES – STATE LEVEL					
C.1	Implementation of Extension Activities through Agri-Entrepreneurs trained under Agri -Clinic scheme.					
	No. of Agri-preneurs involved	Gen.				
		SC				
		ST				
		OBC				
		Min**				
	Total:					
C.2	P.G. Diploma in Agri. Extension. Mgmt.					
	No. of functionaries enrolled	Gen.				
		SC				
		ST				
		OBC				
		Min.**				
	Total:					
Total (C.1 to C.2)						
D.	INNOVATIVE ACTIVITIES – DISTRICT LEVEL					
D.1	Support for district level Training Institutions – It may include both “Operational Expenses” and Non-Recurring Expenditure					
D.2	(i) Setting up CRS					
	- No. of CRS supported for infrastructure					
	- Content Creation					
	a) 1 st year for two hrs. of daily programme					
	b) 2 nd year for 1.1/2 hrs of daily programme					
	c) 3 rd Year for ½ Hr. of daily programme					
D.3	Farmer Friend		10701	10462	1284.1200	1252.89900
Total (D.1 to D.3)					1284.1200	1252.89900
E.	OTHER INNOVATIVE ACTIVITIES					
E.1	Innovative activities - State component					
E.2	Innovative activities – District component					
Total (E.1 & E.2)						
F.	IDT component					
F.1	Display board					
F.2	Pico projector					
F.3	Production of low cost films					
F.4.a	Handheld Devices					
F.4.b	GPRS Charges					
F.5	Kala Jatha					
Total (F.1 to F.4)						
SUB-TOTAL (A. to F.)					1830.90507	1683.88027

G.	Specialist and Functionary Support				
G.1	State Level				
	- State Coordinator	01		3.00000	
	- Gender Coordinator				
	- Director (SAMETI)				
	- Faculty/Deputy Director(SAMETI)	02	02	15.16080	15.16080
	- Accountant-cum-clerk(SAMETI)	01	01	4.82400	4.82400
	- Computer Programmer/Data Entry Operator(SAMETI)	01	01	4.36200	3.85800
G.2	District Level				
	- Project Director	02	02	30.74448	25.28006
	- Deputy Project Director	12	12	108.79200	123.99704
	- Accountant-cum-clerk	21	21	99.73000	98.47414
	- Computer Programmer/Data Entry Operator	24	24	92.49210	92.06270
G.3	Block Level				
	- Block Technology Manager (BTM) including Operational Expenses	157	148	832.95156	828.35173
	- Assistant Technology Manager (ATM) including Operational Expenses	371	381	1533.28799	1522.03766
Total (G)				2725.34493	2714.04613
GRAND TOTAL (A. to G.)				4556.25000	4397.92640

Note: Liability under Agriculture Extension/ATMA Programme (KY) of 2023-24 is Rs. 97.00845 lakh.

7. Financial Summary

F.	FINANCIAL SUMMARY	Amount
S.No	Activities	
F1	Unspent opening balance as on 01.04.2023	275.99318
	Central Share	165.59590
	State Share	110.39728
F.2	Funds received from DAC	2436.99600
F.3	Bank Interest accrued during the year	7.87021
F.4	Release of State's Matching Share	1824.85500
F.5	Total Expenditure	4397.92640
	Central Share	2513.46594
	State Share	1884.46046
F.6	Unspent closing balance as on 01.04.2024	139.91778
	Central Share	89.12596
	State Share	50.79182

T = Target, A = Achievement, AA = Allocation approved under SEWP, E = Expenditure incurred, Min = Minorities covers Muslims, Christians, Sikhs, Buddhists & Parsis.

Institution wise details may please be furnished in item 3 under Annexure-I.

\$ Applicable for only State level. Hence, these fields have to be disabled for District level data entry.

* The man-days for training and exposure visits may be worked out by multiplying no. of extension personnel/ farmers with actual number of days of training/ exposure visit. MD = Number of Participants x No. of Days of Actual Training

** Including Muslims, Christians, Sikhs, Buddhists and Parsis.

*** Demonstration support to CIG/individual farmer should be treated as one demonstration

8.Manpower Status

Sr.No.	Post	No. of Posts as per State's eligibility	No. of Posts approved in SEWP by SLSC	Scale/avg. monthly emoluments in case of regular employees	Consolidated emoluments in case of Contractual Employee
1.	State Coordinator	01	01		
2.	Gender Coordinator				
3.	Director, SAMETI	01	01		
4.	DD, SAMETI	08	08		75550.00
5.	Accountant-cum-Clerk	01	01		40200.00
6.	Computer Programmer at SAMETI	01	01		31150.00
7.	PD, ATMA	24	02		128102.00
8.	DYPD, ATMA	24	24		71750.00
9.	Accountant-cum-Clerk at District level	24	24		40200.00
10.	Computer Programmer at District level	24	24		29550.00
11.	BTM	263	263		45450.00
12.	ATM	789	789		36550.00
13.	Total	1161	1161		

9.Public Private Partnership in Extension

Private Agency	Extension Activities undertaken	Mode –U/s 35CCC/PPP/Servi ce Provider	Expenditu re incurred	Private Share out of total exp.	Public Share out of total Exp.	No. of Farmers benefitted out of PPP

10. Training of Extension Personnel

Level of training/Training Institutes involved	No. of Participants
National	23
MANAGE	437
ICAR Institutes	
NIPHM	57
Regional	
EEI	
State	
SAMETI	226
SAUs	01
State Institute of Rural Development (SIRD) Ranchi	15
District	
Dist. Trg. Centres	
KVK	
Others (pl.specify) (ETC Ranchi)	2665
Total	3424

11. Progress on Joint Circular for convergence between Agricultural Research and Extension

- (i) No. of Districts:- 24
- (ii) No. of Blocks:- 263
- (iii) Name 2-3 Good Agricultural Practices being promoted and their impact in terms of production and increasing farmers income.

Sr. No.	Matrix	Unit	Norm	Target	Achievement
1.	Monthly Interface Meeting	Nos.	12/Annum	12	12
2.	Pre-seasonal Technical Updation	Nos.	2	02	
3.	Farmer-Scientist Interaction at District level	Nos.	2 per annum	48	46
4.	Expert Designated at District level	Nos.	1/District	00	
5.	Joint Visits by PD, ATMA and PC, KVK	Nos.	12 Joint Visits	00	12
6.	Districts where Direct Routing of ATMA fund to KVKs	Nos.	Nos. of District	24	

1. Innovative Activity taken up at State Level

Nature of Activity	Progress Achieved	Expenditure incurred

2. Innovative Activity taken up at District Level

Nature of Activity	Progress Achieved	Expenditure incurred

√ 1.Extn.Functionaires Training, 2. Farmers Training, 3.Expo. visit of Extn. Functionaries, 4. Expo. Visit of Farmers, 5.Demonstrations 6. Kisan Mela, Fairs, Exhibitions 7. Farm Schools 8.Group Formation 9. Any other, (pl. specify)